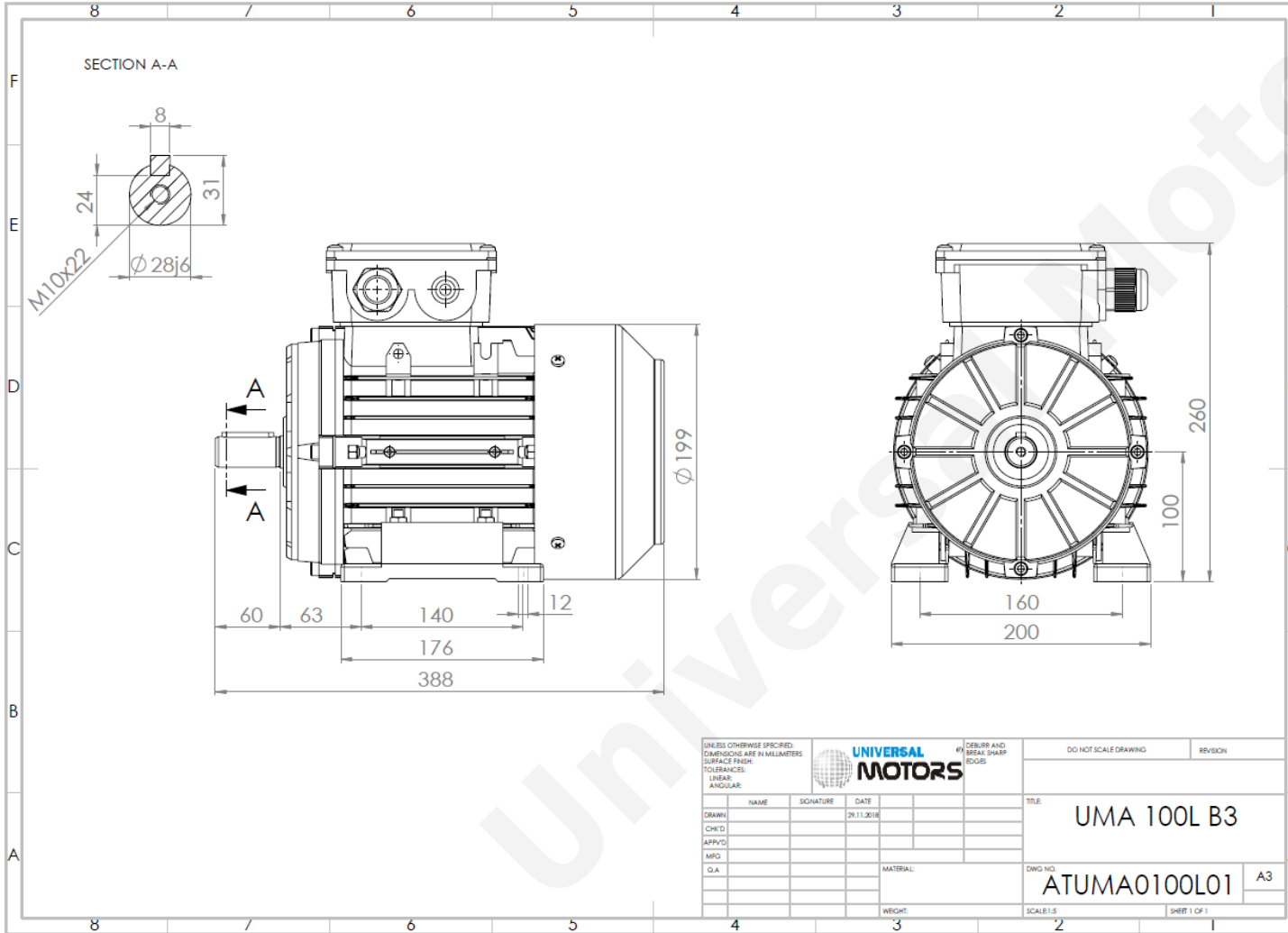




# TECHNICAL DATA

Three Phase Electric Motors - Aluminum Frame  
 UM2A 100L3-4  
 4 kW / 5.5 Cv  
 1440 RPM



Motor type:	<b>UM2A 100L3-4</b>
Output:	<b>4 kW / 5.5 Cv</b>
Speed (min <sup>-1</sup> ):	<b>1440 RPM</b>
Frequency:	<b>50 Hz</b>
Voltage:	<b>400 V</b>
Current:	<b>8.33 A</b>
Power factor (Cos Ø):	<b>0.80</b>
Poles:	<b>4</b>
Insulation class:	<b>F</b>
Temperature rise Class:	<b>B</b>
Efficiency 50%:	<b>86.5 %</b>
Efficiency 75%:	<b>87.4 %</b>
Efficiency 100%:	<b>86.6 %</b>
Torque:	<b>26.4 N.m</b>
Tstarting/Tnominal:	<b>2.8</b>
Istarting/Inominal:	<b>7.2</b>
Tmaximum/Tnominal:	<b>3.2</b>
Noise:	<b>65 Db(A)</b>
Weight:	<b>28.6 Kg</b>
Brake AC:	<b>AC5</b>
Torque Brake DC:	<b>32 N.m</b>
Bearing DE:	<b>6206 2Z</b>
Bearing NDE:	<b>6206 2Z</b>
Torque Brake AC:	<b>40 N.m</b>
Brake DC:	<b>REB-05-12</b>

UNLESS OTHERWISE SPECIFIED: DIMENSIONS ARE IN MILLIMETERS SURFACE FINISH: TOLERANCES: LINEAR: ANGULAR:				UNIVERSAL MOTORS		#1 DEBURR AND BREAK SHARP EDGES		DO NOT SCALE DRAWING		REVISION	
DRAWN	NAME	SIGNATURE	DATE			TITLE:		UMA 100L B3			
CHK'D			29.11.2018			DWG NO.:		ATUMA0100L01		A3	
APP'VD						SCALE:		1:1		SHEET 1 OF 1	
MRG				MATERIAL:		WEIGHT:					
Q.A.											

Regime - S1

Altitude - 1000m

Environment Temperature - 40°C

## CONTACTS:

UNIVERSAL MOTORS Tel: +351 252 299 080  
 Rua de São Brás,745 Fax: +351 252 299 089  
 4480-782 VILA DO CONDE Mail: [geral@universalmotors.pt](mailto:geral@universalmotors.pt)

\* References applied only in the UK